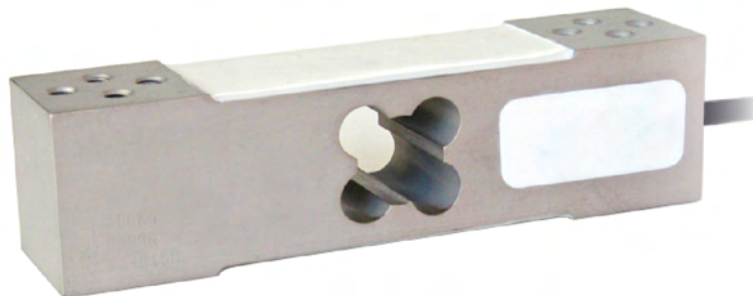
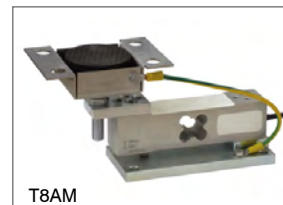




Capacity from 60 kg to 300 kg



MOUNTING KIT



T8AM

It can be used for systems with at least 3 load cells connected in parallel

- ALUMINUM ALLOY
- COMBINED ERROR $\leq \pm 0.02\%$ (0.017% C4; 0.014% C5)
- PROTECTION CLASS IP65

CAPACITY	kg	ACCURACY CLASS					PLATFORM (mm)	NET WEIGHT (kg)	CODE
		C3	C4	C5					
60		•	•	–	•	•	400 x 400	0.6	AM60
100		•	•	–	•	•	400 x 400	0.6	AM100
150		•	•	–	•	•	400 x 400	0.6	AM150
200		•	•	–	•	•	400 x 400	0.6	AM200
300		•	•	•	•	•	400 x 400	0.6	AM300

ON REQUEST

CERTIFICATIONS



OIML R60 C3



Complies with the Eurasian Customs Union standards



Equivalent of the CE marking for the United Kingdom



Complies with United Kingdom regulations for legal for trade use

CERTIFICATIONS ON REQUEST



ATEX II 1GD (zone 0-1-2-20-21-22) (CE - UK CA)



IECEx (zone 0-1-2-20-21-22)



OIML R60 C4/C5



Complies with the Eurasian Customs Union standards for use in potentially explosive atmospheres

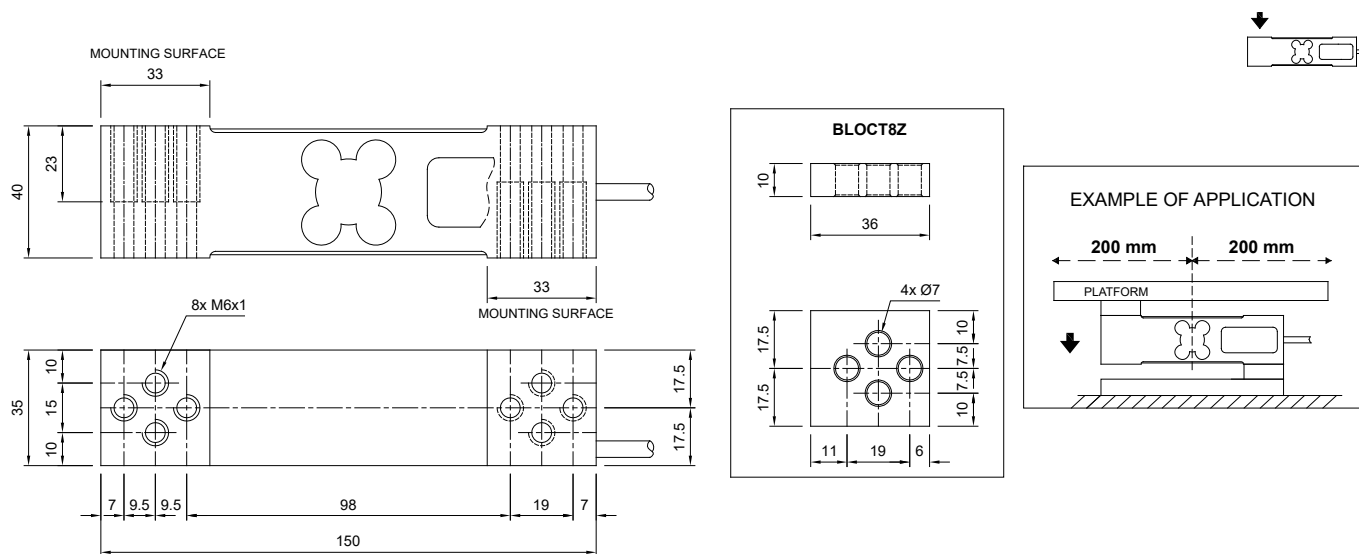


NTEP - Complies with United States regulations for legal for trade use

COMPLEMENTARY ACCESSORIES

	DESCRIPTION	CODE
	Stainless steel and rubber waterproof kit.	IP68AMPRE
	Galvanized steel drawn block.	BLOCT8Z

DIMENSIONS (mm)



TECHNICAL FEATURES

Material	Aluminum alloy				
	C3 • 3000	C4 • 4000	C5 • 5000		
OIML R60 Accuracy class • Verification intervals	60 - 100 - 150 - 200 - 300 kg		300 kg		
Nominal load (E max)	E max / 10000		E max / 20000		
Minimum verification interval (V min)	≤ ±0.02%	≤ ±0.017%	≤ ±0.014%		
Combined error	IP65				
Protection class	Rated output	2 mV/V ± 10%	Input resistance	406 Ω ± 6	
Temperature effect on zero	0.003% °C	Temperature effect on span	0.002% °C	Output resistance	350 Ω ± 3
Temperature effect on span	0.002% °C	Zero balance	≤ ±2%	Insulation resistance	≥ 5000 MΩ
Compensated temperature range	-10 °C / +40 °C	Operating temperature range	-35 °C / +65 °C	Safe overload (% of full scale)	150%
Operating temperature range	-35 °C / +65 °C	Creep at nominal load in 30 minutes	0.025%	Ultimate overload (% of full scale)	300%
Creep at nominal load in 30 minutes	0.025%	Max supply voltage without damage	18 V	Deflection at nominal load	0.5 mm
Max supply voltage without damage	18 V				

ELECTRICAL CONNECTIONS

Cable length	3 m
Cable diameter	5 mm
Cores	4 x 0.20 mm ²

